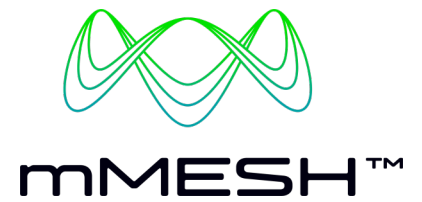


High Power Robust mMESH™ (MK2)

Private Wireless Mesh Connectivity for Challenging Environments



MIMO Option



Enhanced Security
Features



IP Data



Hub-less



Rapid Deploy



10W RF Power



Up to 64 Nodes
In a Network



Mobility



IP Video
Transmission



Powered by mMESH™
COFDM Technology



Data Throughput
up to 200Mbps



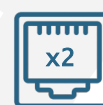
Audio
Communication



DC Powered



Serial Interface

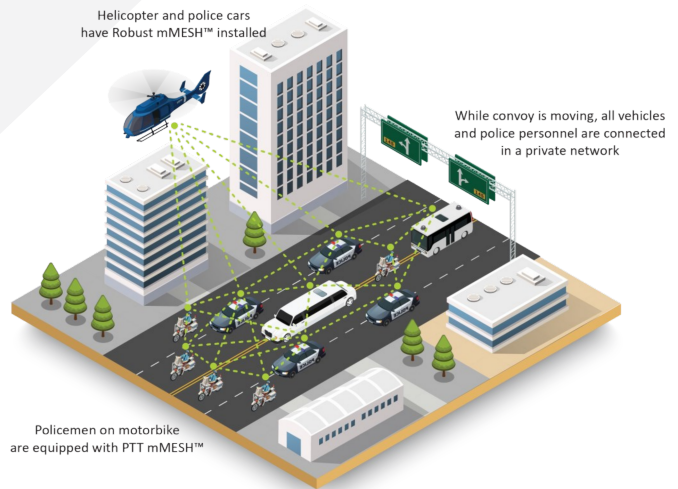


Dual Ethernet Port

Application Scenario Examples



An ad-hoc network can be quickly established with mMESH™ radios and quick deploy satcom terminals, allowing telcos to be quickly re-establish communication after a disaster



Drone installed with ACE6 mMESH™ radio unit

Command Center with ACE6 Robust mMESH™ (High Power)

Vehicles installed with ACE6 Robust mMESH™

Tactical Units equipped with ACE6 PTT mMESH™

In a ship-boarding operation, live video are transmitted to Commanding Officer at the Patrol Vessel

All police vessels have Robust mMESH™ installed

Shipboard team are equipped with Bodyworn mMESH™ with bodyworn or helmet camera



The High Power Robust mMESH™ MK2 radio is designed for long range transmission, frequently installed as infrastructure radio nodes on buildings or telecom towers. It can also be installed in sea, air, land vehicles for operational field deployments. The higher power provides longer range transmission compared to the Robust mMESH™.



ACE6 Technology Pte Ltd

Tel: (+65) 6258 4692 Fax: (+65) 6258 4694 sales@ace6tech.com www.ace6tech.com



fb.com/ace6tech



linkedin.com/company/ace6tech